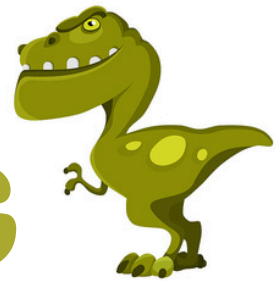




DINO COLORING



Spinosaurus Fact Sheet



What does the name Spinosaurus mean?

Spinosaurus translates to "spine lizard". This name was given to it because of the tall spines on its back.

What family was the Spinosaurus part of?

The Spinosaurus is part of the Spinosauridae family. It is a family of dinosaurs that were carnivores and walked on two legs. It is split further into two subfamilies: Spinosaurinae and Baryonychinae.

What did the Spinosaurus eat?

The Triceratops was a carnivore, feeding mainly on fish as well as small to medium-sized animals. The teeth of the Spinosaurus are similar to crocodiles and were used to eat and hold prey.

When and where did the Spinosaurus live?

The Spinosaurus lived in many areas including Africa, Europe, South America, Asia, and Australia in the Early to Mid Cretaceous Period, about 145 to 100.5 million years ago.