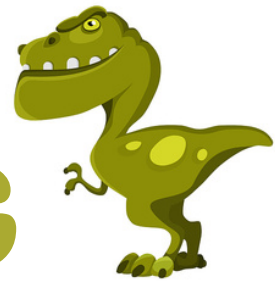
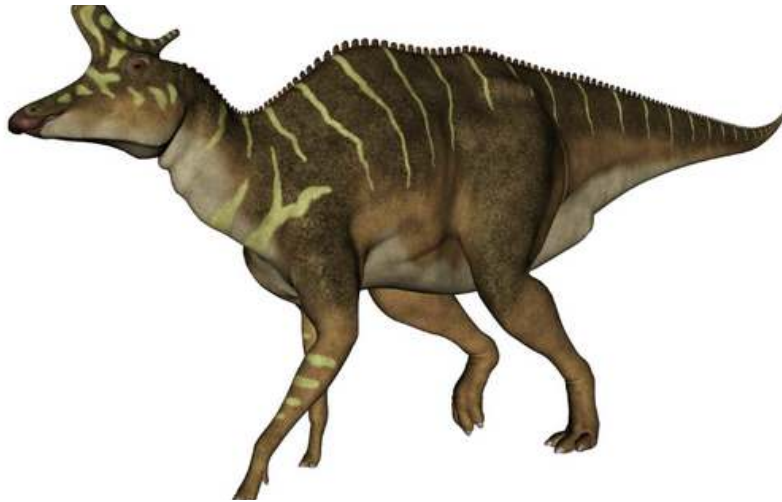




DINO COLORING



Lambeosaurus Fact Sheet



What does the name Lambeosaurus mean?

Lambeosaurus translates to "Lambe's lizard". It was named after Lawrence Lambe, a geologist, paleontologist, and ecologist that found the first remains of the dinosaur.

What family was the Lambeosaurus part of?

The Lambeosaurus is part of the Hadrosauridae family. It is a family of dinosaurs that were herbivores and walked on both two legs and four legs.

What did the Lambeosaurus eat?

The Lambeosaurus was a herbivore, existing on prehistoric plant life. Its skull structure allowed it to grind plants in a way that is similar to chewing.

When and where did the Lambeosaurus live?

The Lambeosaurus lived in what is now The United States, Canada, and Mexico in the Late Cretaceous Period, about 75 million years ago.



How big was the Lambeosaurus?

It is believed that the Lambeosaurus could grow to 7 m (23 ft) tall and weigh about 5.6 tonnes.

When was the first skeleton of a Lambeosaurus found?

The first remains of a Lambeosaurus were found by Lawrence Lambe in Alberta, Canada in 1902. He found limb material, an upper jaw, and other bones.

What are some unique features of the Lambeosaurus?

One of the most distinctive features of the Lambeosaurus is a hatchet-shaped crest on its head. The crest was on the top of its head with the nasal cavity running through it, making it hollow. The function of the crest is unknown, but some scientists believe it may have been used to improve the sense of smell, to produce sounds or a way to show differences between different species or sexes.

The Lambeosaurus is also described as duck-billed because the bones on its snout are flat and have a similar appearance to a duck-bill.

What are other interesting facts about Lambeosaurus?

It is believed that the Lambeosaurus grew and replaced its teeth throughout its life.

There are only two valid Lambeosaurus species - Lambeosaurus lambei and Lambeosaurus magnicristatus.

Get more fact sheets at <http://dinocoloring.com/dinofacts>